



## **EVACUATION ALERT**

### **Panorama Area and Toby Creek Road Area Southwest of Lillian Lake**

**Issued on 17-AUG-2023 at 08:00AM**

An Evacuation Alert has been issued by the **Regional District of East Kootenay** at the Regional Emergency Operations Centre (REOC) due to the **Horsethief Creek Wildfire**.

Because of the potential danger to life and health, the Regional District of East Kootenay has issued an **Evacuation Alert** for the following areas (**See Attached Map**):

- **ALL PROPERTIES IN PANORAMA MOUNTAIN VILLAGE**
- **ALL PROPERTIES ALONG TOBY CREEK ROAD SOUTHWEST OF LILIAN LAKE, INCLUDING LANAC ROAD, NEAVE ROAD, AND HYDRO SUBSTATION RD**

An Evacuation Alert has been issued to prepare you to evacuate your premises or property should it be found necessary. Residents will be given as much advance notice as possible prior to evacuation; however, you may receive limited notice due to changing conditions.

### **WHAT YOU SHOULD DO:**

- Register for the Evacuation Notification System at [www.rdek.bc.ca](http://www.rdek.bc.ca) – this will ensure that we can reach you rapidly if the evacuation status changes.
- Pre-register all household members on the provincial Evacuee Registration & Assistance (ERA) Tool at <https://era-evacuees.embc.gov.bc.ca> Persons who have a BC Services Card may be eligible to receive an e-transfer using the BC Services Card App.
- Have a 'To-Go Bag' packed and ready to leave at a moment's notice, with essential items such as government-issued ID, medications, money, clothing, personal care items, important documents (e.g. insurance, banking and mortgage info), valuables and keepsakes.
- Arrange a meeting location outside of the Evacuation Alert area where family members can meet if an Evacuation Order is issued while not together.
- Relocate any large animals to a safe area and prepare to take your pets with you. Include food, water, carriers, medication and anything necessary for the animal's safe well-being.
- Relocate recreational vehicles and boats at the Alert stage as there will not be time to move them in the event of an Order.
- Ensure there is enough fuel in vehicles to safely leave the area if an Evacuation Order is issued.
- Should an Evacuation Order need to be issued, provincial Emergency Support Services are only available for those displaced from their primary residence.
- Plan ahead for accommodation should an Order need to be issued, if possible, including

staying with friends or relatives, or finding alternative accommodations.

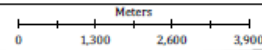
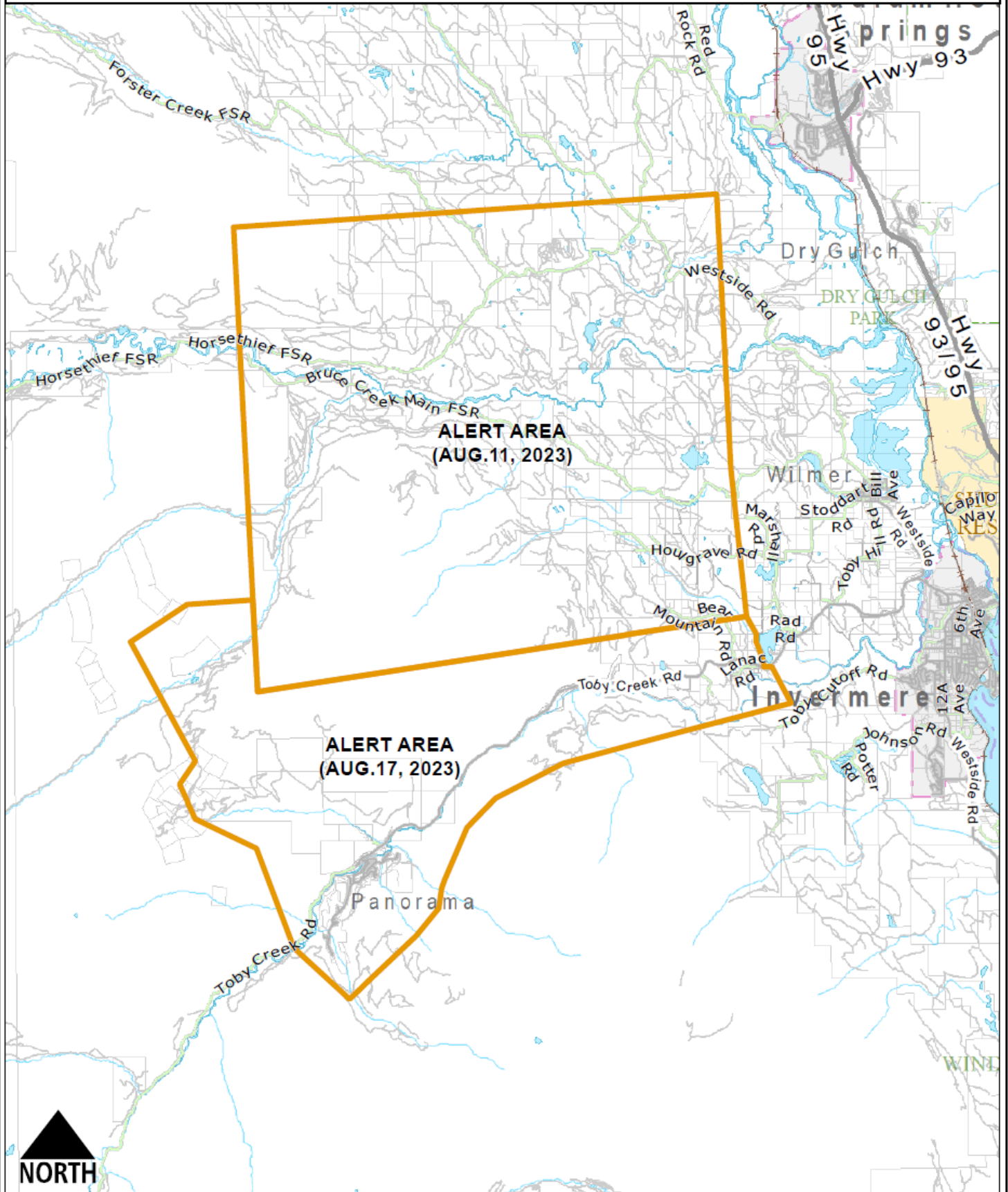
- Monitor credible news sources and official webpages for information.


Further information will be issued should the situation change; updates will be provided on the RDEK website ([www.rdek.bc.ca](http://www.rdek.bc.ca)) and Facebook page. For more information call the RDEK Information line at 250-426-2188 or toll free at 1-855-346-2188.

A handwritten signature in black ink that reads "Rob C. Gay". The signature is written in a cursive, flowing style.

Rob C. Gay,  
Board Chair  
**Regional District of East Kootenay**

# Horsethief Creek - N22243 - EVACUATION ALERT



 Alert Area